

A
WORLD
WITHIN



CAPITAL CITY

a world within

Residential | Commercial | Industrial



500+
HOMES

""hm ~ZoJm Ka Vmo hgoJm n[adm
lwer go Py_oJm gšgma...

Welcome to the ever inspiring world
of privilege & convenience

A home is what you are. A new home in Capital City means you have arrived. It will add a new charm to your persona. And enhance your lifestyle to a great extent. Living here with your loved ones is a fresh beginning of a brand new era. Where everyday will be an utterly delightful joyride and each moment will turn into a precious memory. Live amongst the likeminded, progressive neighbours and feel inspired to bring out the best in you.

86 - 2BHKs | 338 - 1 BHKs | 164 - Studio Apartments



Legends

- | | |
|-------------------------------------|--|
| A Capital Square | G Capital Industrial Complex I |
| B Capital City | H Capital Industrial Complex II |
| C Capital Industrial Park I | I Nighoje Business Center |
| D Nighoje Logistics | J Capital Plaza |
| E Capital Industrial Park II | K Capital Mall |
| F Nighoje Logistics | L Capital International School |



CAPITAL CITY

a world within

Residential | Commercial | Industrial

Make a move.

Be blessed by a rewarding future.

Belong to a place on earth that is destined to grow every moment. Spread across whopping 30 acre on the fastest developing growth corridor of Pune, this is a paradise of good fortune & golden opportunities! Here, the residential development comprising 1 & 2 BHK, studio apartments is surrounded by educational, commercial, industrial, entertainment & leisure hubs. An office, a shop, an industrial gala or unit, a grand showroom, a well-equipped healthcare facility or a home here where every treasured happiness is within easy reach is for the forward thinking people who see beyond future and make the most of the present. Welcome to the Growth Hub.

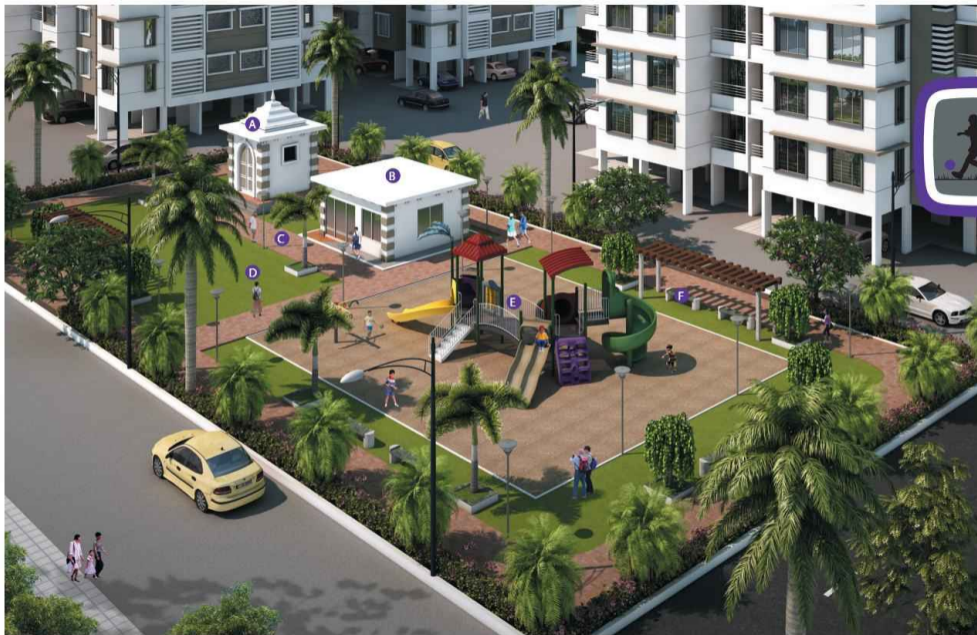
Near Talawade IT Park,
Opp. Mahindra & Mahindra, Pune.



A splendid world of a Lakeside Living Paradise

If you ever have wished to live an invigoratingly charming life by the side of a lake, then the fulfillment is just a few days away. Explore newer ways of meditation, yoga beside water reservoir. Or simply sit there in a dialogue with self for hours together...





Amenities

- A Temple
- B Club House
- C Jogging Track
- D Party Lawn
- E Children's Play Area
- F Senior citizen area

A world of amazing delights

After a day's hard work, your body needs a restful relaxation, your mind needs to be rejuvenated and your soul needs a calm pampering. As home is a place where you draw your inspirations from. At Capital City, get the celestial peace of mind at a wholly comfortable setting. Talk to your loved ones, share your feelings with them and revitalize your energy levels. So that when you set out of your home the next day, you're throbbing with enthusiasm with the divine gusto.



Features :

- Designer Entrance lobby Area
- Elevators for each Wing
- Power back up for one Elevator & in essential Common areas
- Rain water Harvesting
- Well planned Landscaped Areas
- Firefighting System
- Pick up stop for Children's School Bus at Entrance Gate
- Ample Parking space
- Decorative Entrance Gate with Security Cabin & Compound wall

Specification

- **STRUCTURE**
R.C.C. framed structure
Earthquake Resistance
- **BRICKWORK**
External 5" thick and internal 4" thick in AAC / CLC
- **PLASTER**
Internal : Gypsum or sanla plaster to all walls
External : Sand faced plaster.
- **WALL FINISH**
External : Acrylic paint or equivalent
Internal : Acrylic distemper paint or equivalent
- **KITCHEN**
Wall finishes : Good quality wall tiles upto 3ft above kitchen platform.
Accessories : Marble/granite top platform upto 2.5 mtr. with S.S. Bowl sink
- **WINDOWS**
- **FLOORING**
Living : Good quality vitrified tiles
Balconies & Terraces : Good quality anti-skid tiles
Window sills : Natural stone or equivalent
Staircase tread & riser : Natural stone/tiles.
- **BATHROOMS**
Walls : Good quality wall tiles upto lintle level
Flooring : Good quality antiskid tiles
Fittings : Good quality sanitary fixtures & C.P. Bath fittings.
- **DOORS**
Main Entry : Wooden frame with decorative laminated door
Internal : Standard door frame with flush / moulded door
- **ELECTRICAL**
All copper electrical wiring in concealed conduit with good quality switches with adequate points. T.V. & Telephone point in living room
- **PLUMBING**
Internal plumbing concealed CPVC lines & external plumbing in PVC pipes or equivalent





1 BHK



2 BHK

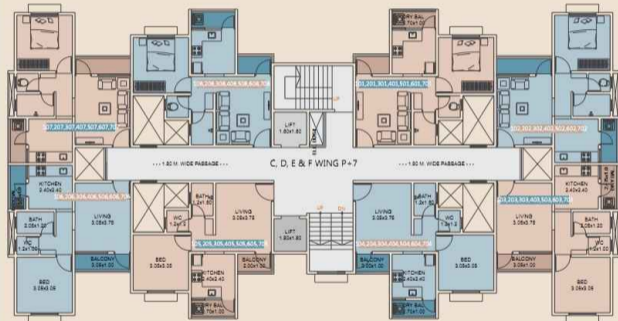
A & B BUILDING



TYPICAL FLOOR PLAN
1BHK



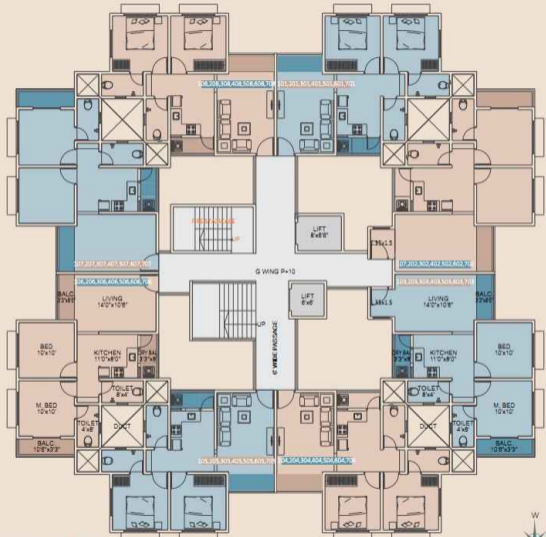
C, D, E & F BUILDING



TYPICAL FLOOR PLAN
1BHK



G BUILDING



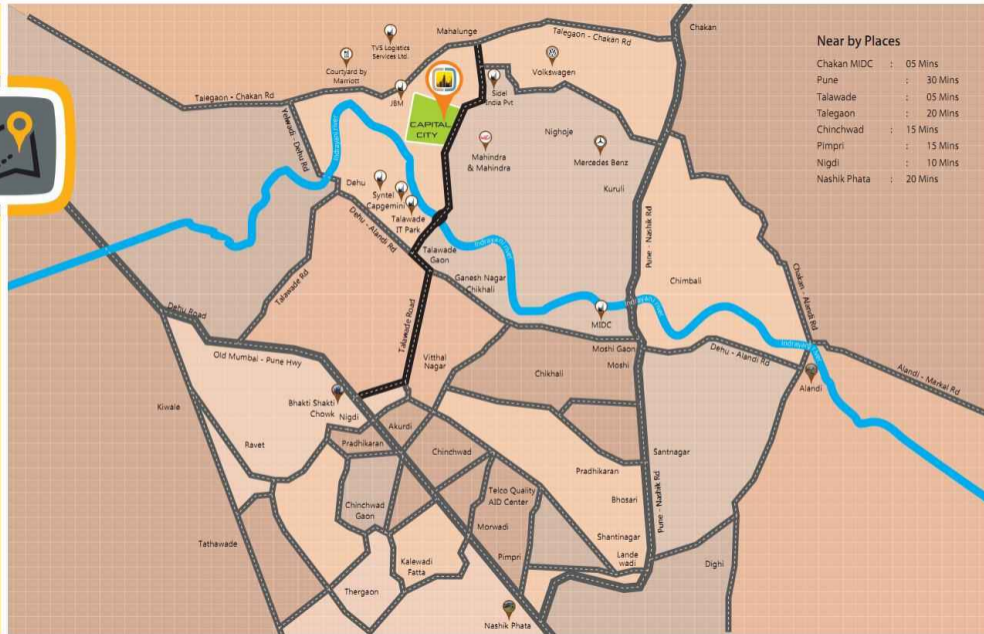
TYPICAL FLOOR PLAN
2 BHK





The Rising Location

PCMC has long been the preferred territory of the new-age, progressive families. But this location where Capital City is being constructed, is a refreshingly pleasant surprise. It is bang opposite to Mahindra & Mahindra Plant of Nighoje, simply a few seconds from Chakan-Talegaon Road. The Chakan MIDC is on 5 minutes drive and fast-developing Talawade IT Park is at hardly any distance of just 2 kilometers. It means, Capital City is strategically placed near manufacturing & IT hubs of PCMC. Besides easy connectivity to upmarket suburbs of Nigdi, Akurdi, Bhosari, Chinchwad etc. elevate the standards of living here. So be it professional, career opportunities or an empowered lifestyle, the new rising location of PCMC upholds a wonderful living experience for sure.





Joint Venture with
Nighoje Logistic & Services Ltd.

Office : CTS 4441, Hotel Kundan Place, Mumbai - Pune Road, Akurdi, Pune - 35 | Ph.: 020 2724 2424

Site Address : Near Talawade IT Park, Opp. Mahindra & Mahindra, Nighoje, Pune

Ph.: 70660 40544 | 70300 03344 | Email : sales@capitalcity.co.in | website : www.capitalcity.co.in